



॥ त्वं ज्ञानमयो विद्वानमयोऽसि ॥

# Graph Introduction

Saptarshi Pyne

Assistant Professor

Department of Computer Science and Engineering  
Indian Institute of Technology Jodhpur, Rajasthan, India 342030

**CSL7390 Social Network Analysis Lecture 2**

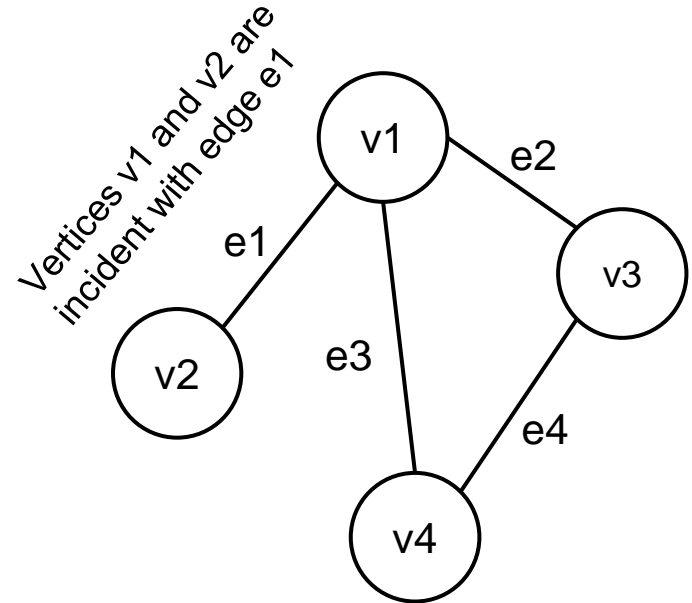
**January 8<sup>th</sup>, 2024**

# What we discussed in the last class

- What is a social network?
- What are the different types of social networks?
- Why do we analyse social networks?

# Incidence matrix of an undirected graph

	e1	e2	e3	e4
v1	1	1	1	0
v2	1	0	0	0
v3	0	1	0	1
v4	0	0	1	1

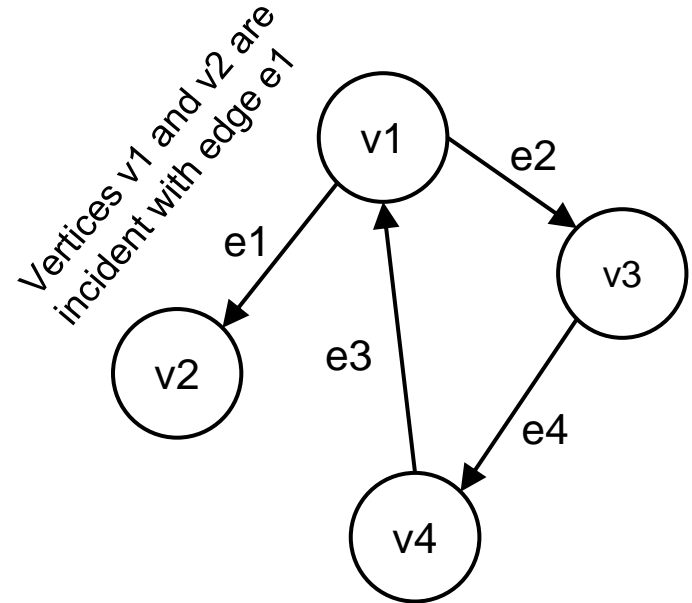


Replace the 1's with edge weights for weighted graphs

Incidence matrix represents vertex-edge incidence relationships.  
Adjacency matrix represents vertex-vertex adjacency relationships.

# Incidence matrix of a directed graph

	e1	e2	e3	e4
v1	-1	-1	1	0
v2	1	0	0	0
v3	0	1	0	-1
v4	0	0	-1	1



Replace the 1's with edge weights for weighted graphs

# Introduction to python and networkx

<https://nptel.ac.in/courses/106106169>

## → Week 1: Introduction

→ Introduction to Python-1

→ Introduction to Python-1

→ Introduction to Networkx-1

→ Introduction to Networkx-2

# Smart cities: The ultimate social network?

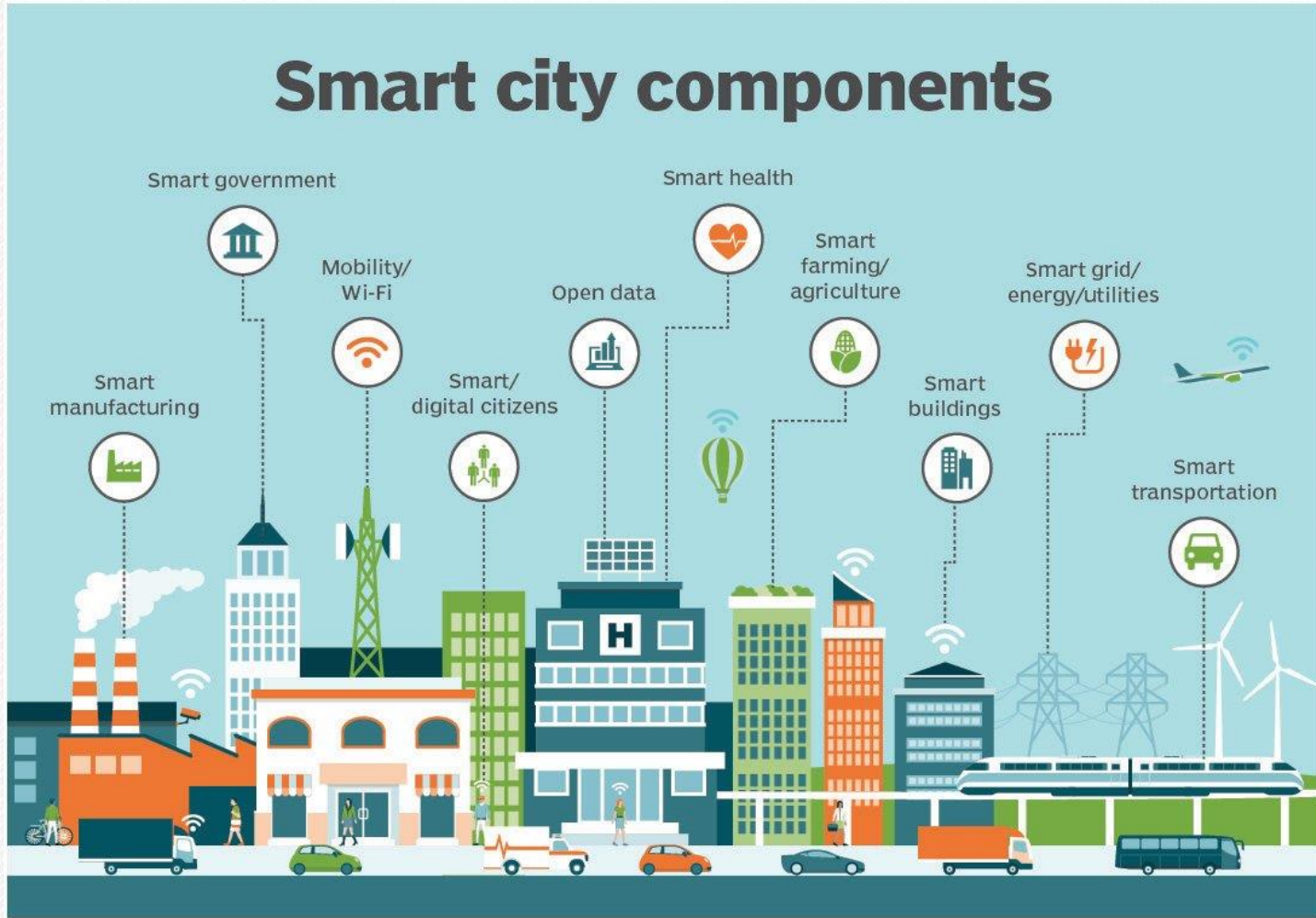


ILLUSTRATION: ELENA BSL/ADOBE STOCK

©2017 TECHTARGET. ALL RIGHTS RESERVED TechTarget

# The future

What about the inter-galactic social networks?

Thank you